

Oberflächen-Übersicht

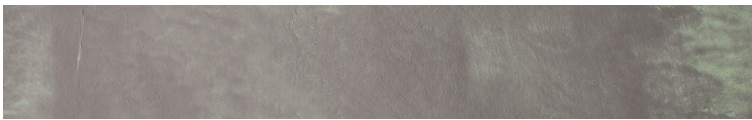
Trägermaterial

Vlies
3050 x 1300 x 0,2 mm
Rückseite Natur

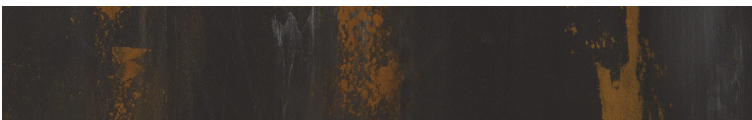
HPL
3050 x 1300 x 0,7 mm
Rückseite geschliffen

MDF
3050 x 1220 x 18 mm
Rückseite weiß mit
Grundierfolie

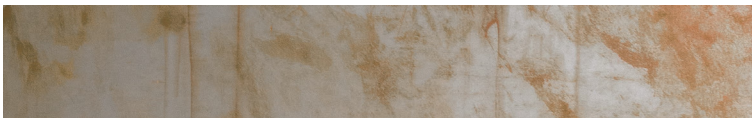
Wandwerk Vintage



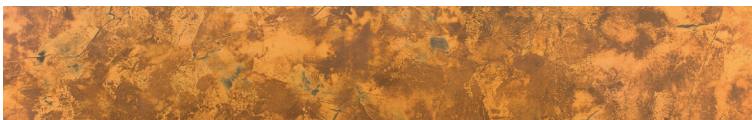
Kupfer
96011101 (MDF)
96011102 (HPL)
96011103 (Vlies)



Cortenstahl²
96011301 (MDF)
96011302 (HPL)
96011303 (Vlies)

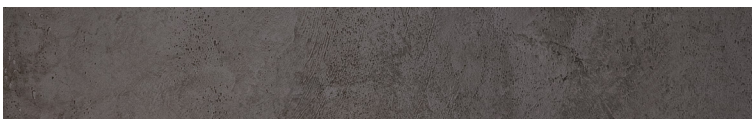


Cortenstahl
96011201 (MDF)
96011202 (HDL)
96011203 (Vlies)



Goldstahl
96011401 (MDF)
96011402 (HPL)
96011403 (Vlies)

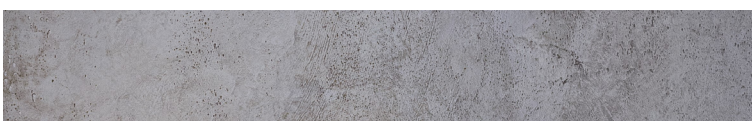
Wandwerk Steel



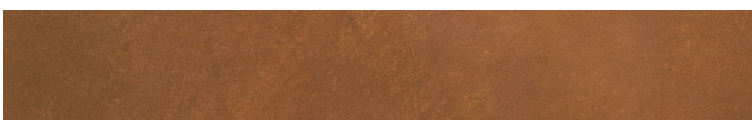
Schwarzstahl
96021101 (MDF)
96021102 (HPL)
96021103 (Vlies)



Strukturrost*
96021301 (MDF)
96021302 (HPL)

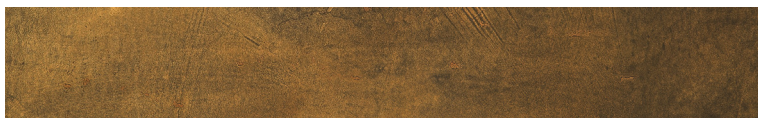


Silberstahl
96021201 (MDF)
96021202 (HPL)
96021203 (Vlies)



Rost
96021401 (MDF)
96021402 (HPL)
96021403 (Vlies)

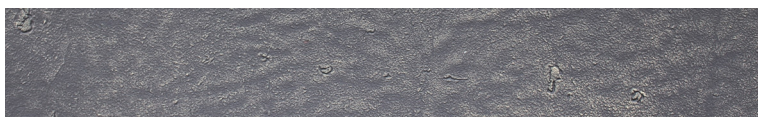
Wandwerk ShinyConcrete



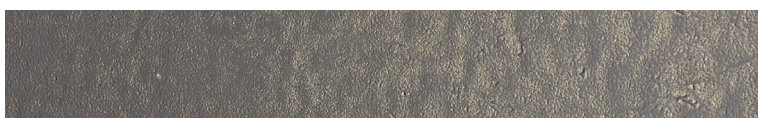
Gold
96031101 (MDF)
96031101 (HPL)
96031101 (Vlies)



Blau
96031201 (MDF)
96031202 (HPL)
96031203 (Vlies)

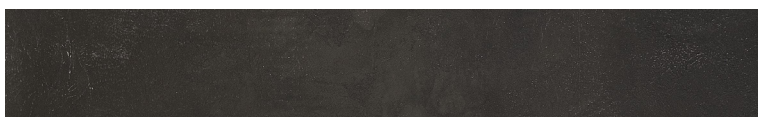


Silber
96031301 (MDF)
96031302 (HPL)
96031303 (Vlies)

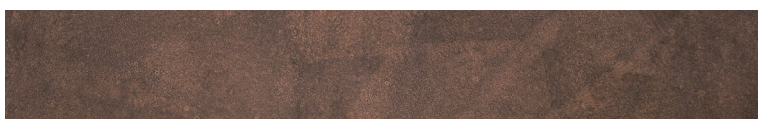


Satin
96031401 (MDF)
96031402 (HPL)
96031403 (Vlies)

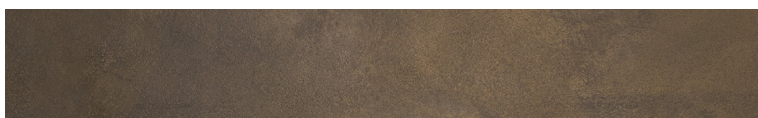
Wandwerk Asphalt



Schwarz*
96041101 (MDF)
96041102 (HPL)



Bronze
96041203 (Vlies)



Gold
96041303 (Vlies)



Kupfer
96041403 (Vlies)

Produkteigenschaften			
Trägermaterial	Vlies	HPL	MDF
Oberflächenmaterial	Mineralische Beschichtung in Handarbeit		
Träger in mm	0,2	0,7	18
Plattenkanten	unbesäumt		
Beschichtung mm	ca. 0,1 - 0,4 mm Stärken können im zehntel Bereich differieren		
Gewicht kg/m ²	ca. 0,5	ca. 1,6	ca. 13,5
Temperaturbeständigkeit	bis 60 °C		
Feuchtraumeignung	••••		
Abriebbeständigkeit	••••••		
Gerollt verpackbar	✓	✓	--

* Die Oberflächen sind nicht auf Vlies erhältlich.