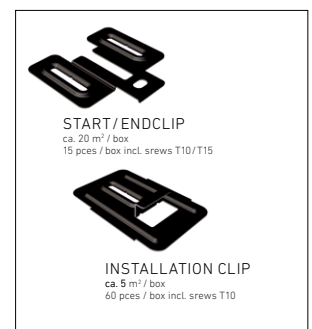
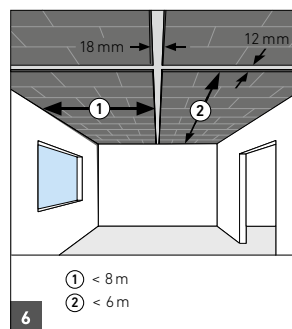
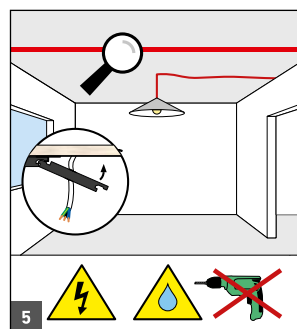
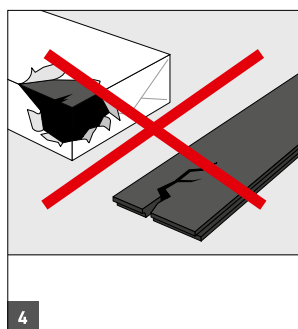
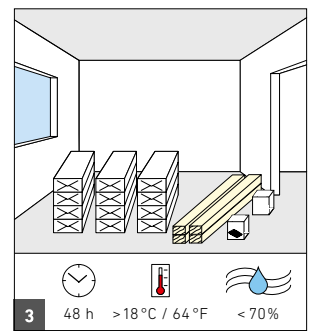
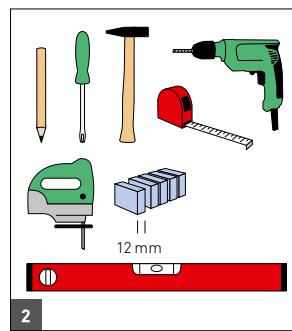
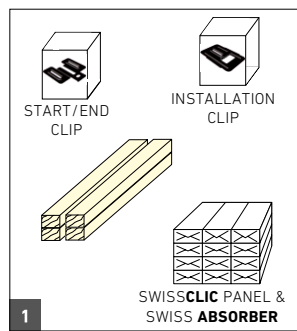
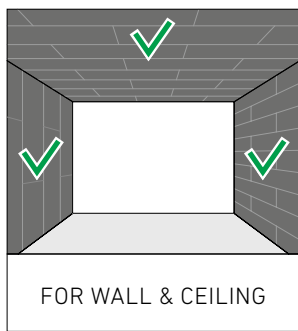
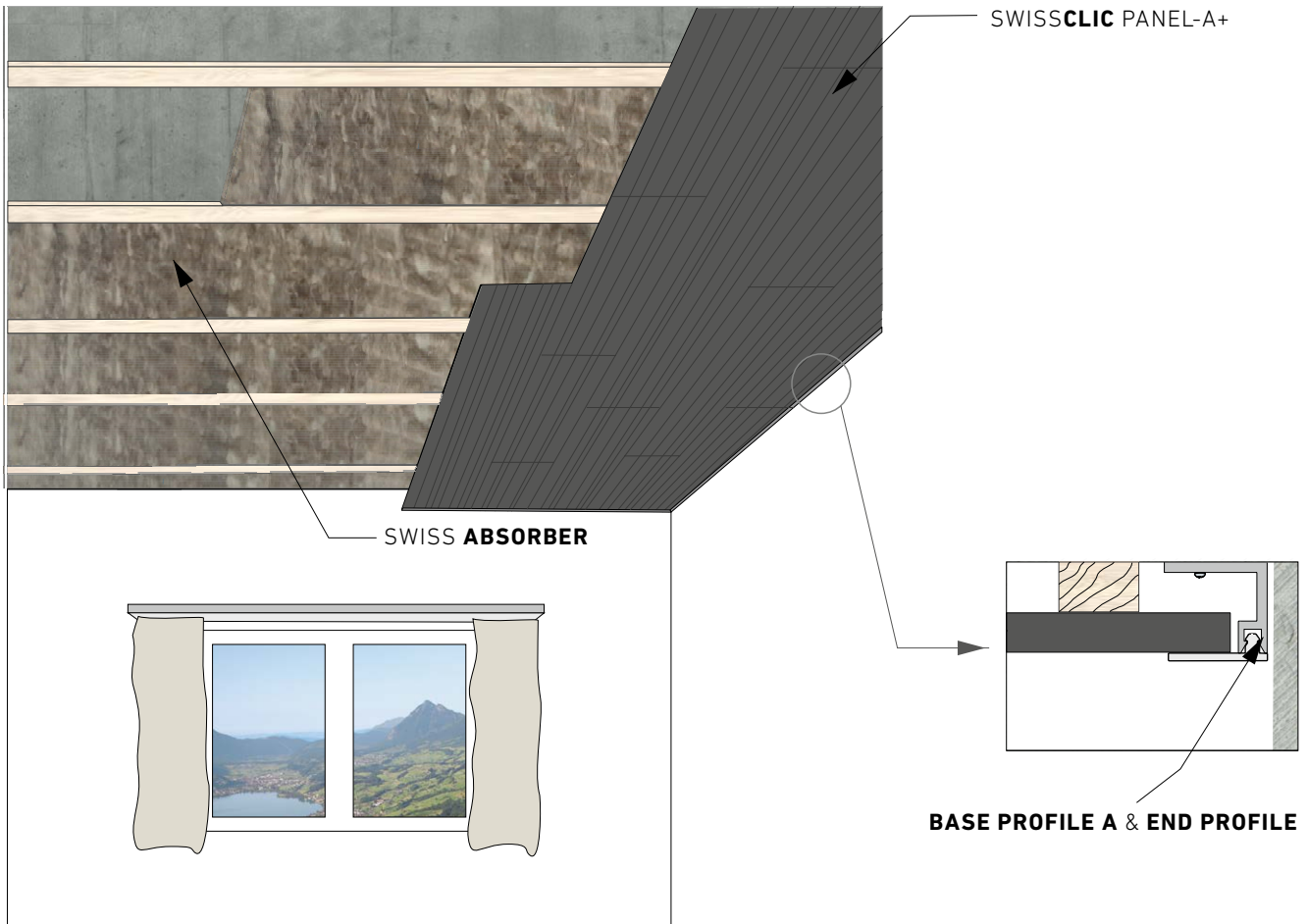


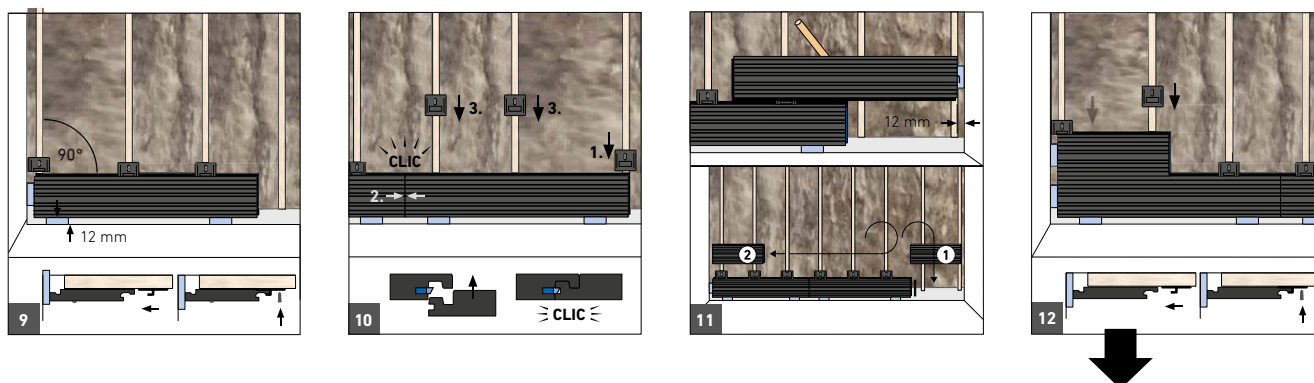
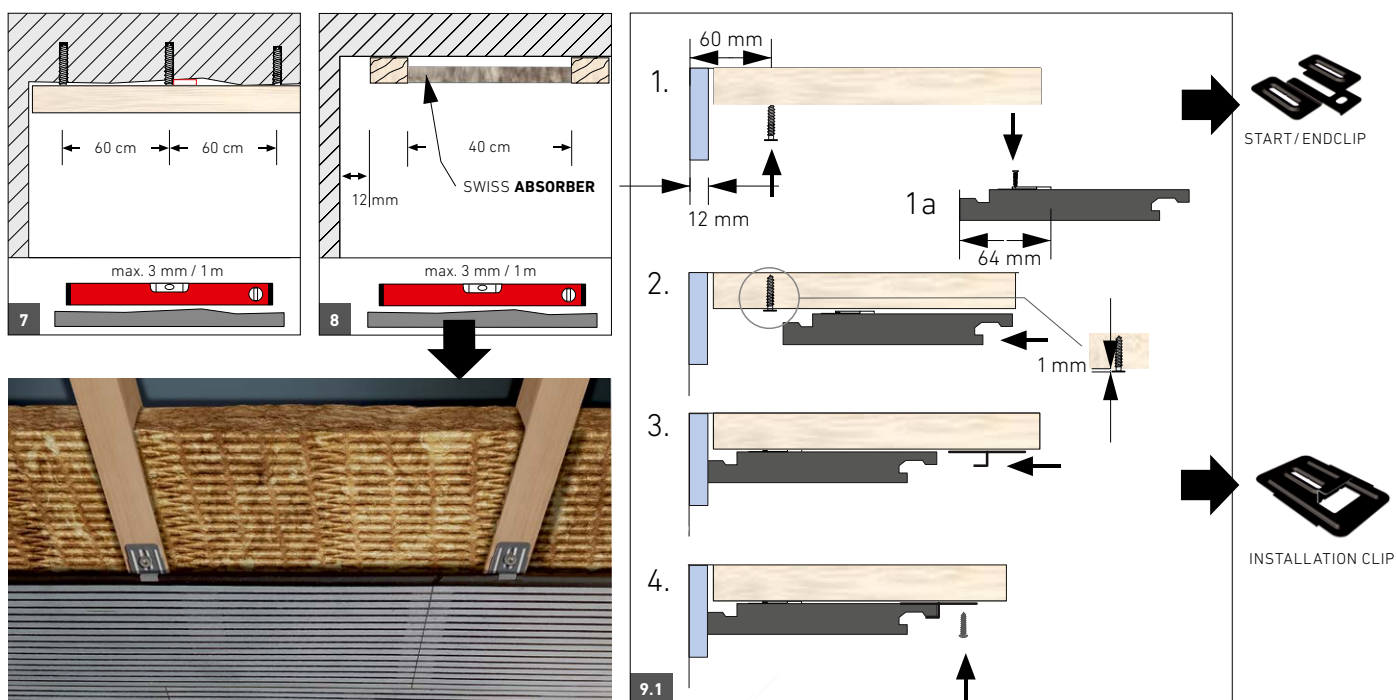
INSTALLATION GUIDE | VERLEGEANLEITUNG

SWISSCLIC PANEL-A+ ON WOOD

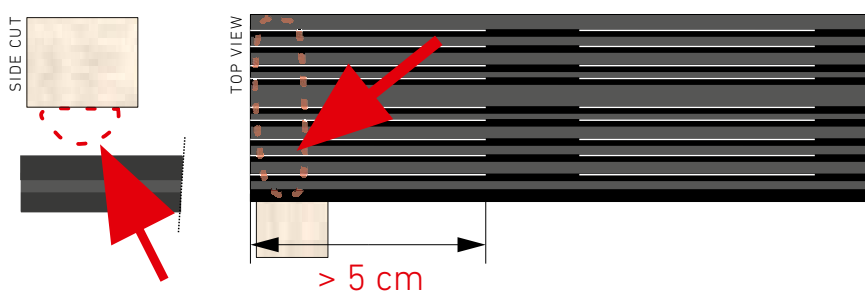




START



FOR INSTALLATION WITHOUT BASE & END PROFIL



EN

If the distance is > 5 cm = put **elastic silicon glue** between SWISSCLIC PANEL and the wooden subconstruction to hold the small lamellas.

DE

Bei > 5 cm Distanz zum Steg = Setze **elastischen Silikonkleber** zwischen das SWISSCLIC PANEL und die hölzerne Unterkonstruktion um die schmalen Lamellen zu halten.

FR

Pour une distance de > 5 cm jusqu'à la traverse = Mettez une **colle élastique silicone** entre le SWISSCLIC PANEL et la sous-construction en bois pour fixer les minces lamelles.

END

