



**PURICELLI**

---

SUSTAINABLE SURFACES





# Texture

**40 texture** are the result of extensive, detailed research and the meticulous fusion of **design with technological innovation**.

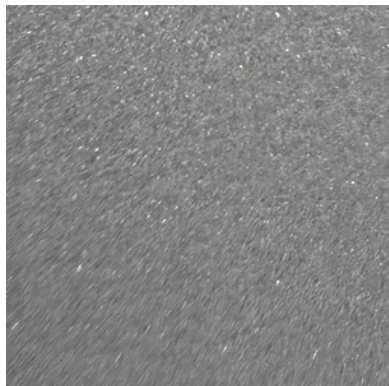
Our goal was to make laminates replicate the materials they are inspired by with more fidelity than ever, and to intensify this impression of authenticity through the sense of **touch**.

This painstaking approach has allowed the Puricelli Group to complement its materials with a choice of textures from stone and wood to textiles offering an extraordinary degree of tactile and visual depth.

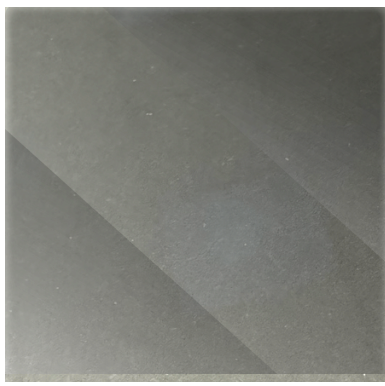




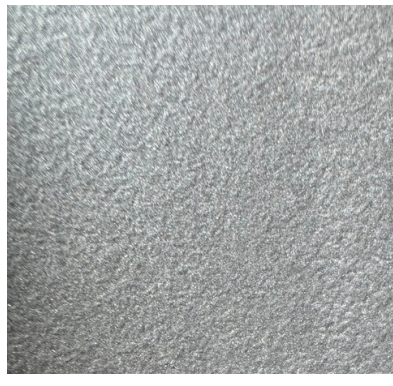
# Texture - 7



OP - OPACO



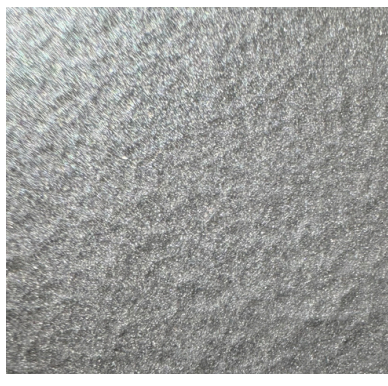
LU - LUCIDO



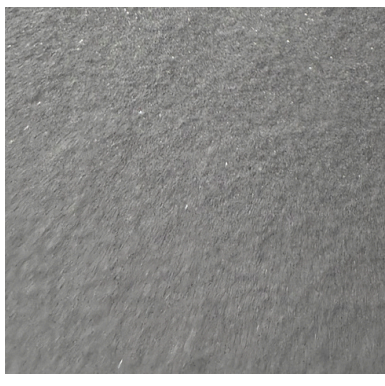
NC - CERA



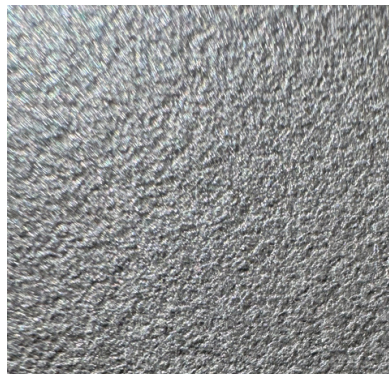
FC - COMETA



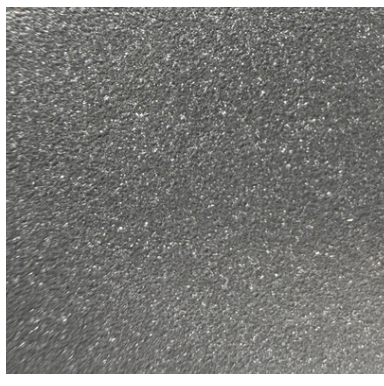
PK - PEKARY



FN - NATURALE



FQ - QUARZ



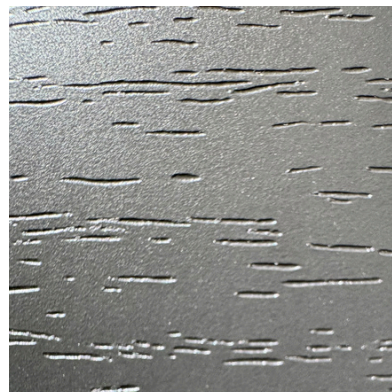
PT - SETA



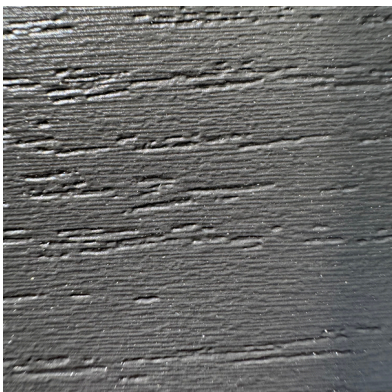
TP - TOPACE



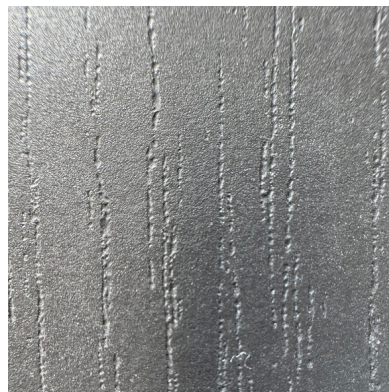
SN - SAND



PL - PORO LEGNO



PS - PORO SUPER



PO - PORO ORIZZONTALE



FK - KRISTALL



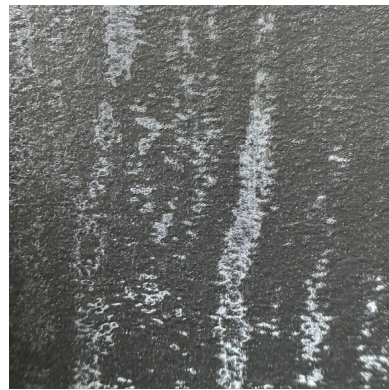
AR - ARDESIA



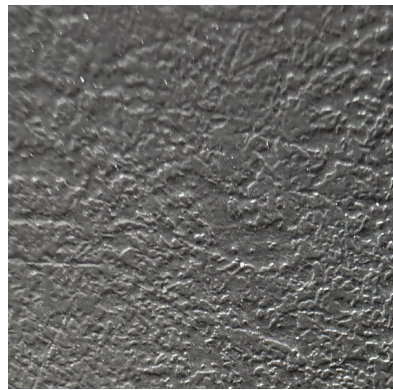
FP - PELLE



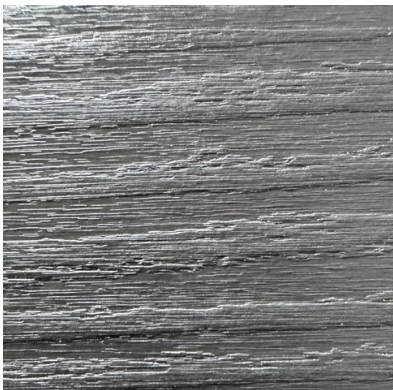
IS - PIETRA



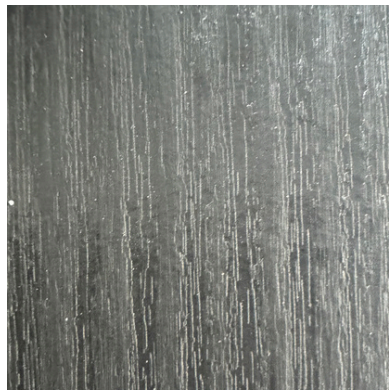
CF - CROSSFIRE



QR - QUARRY



SC - MATRIX



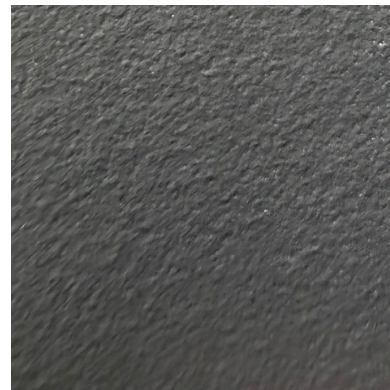
TR - TRANCHE'



CE - CERAMIC



TE - TELA



SD - SUEDE





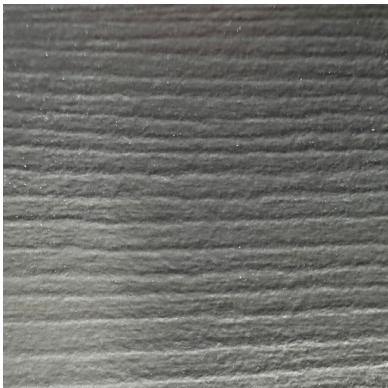
# Texture - 7



SK - SILK



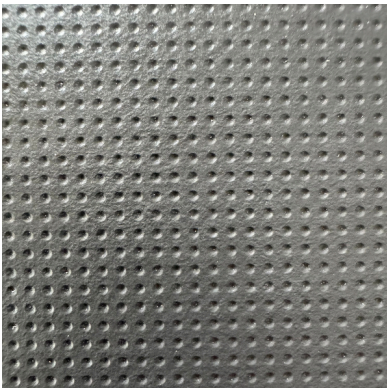
RO - ROCCIA



BB - BARNBOARD



SW - SAWCUT



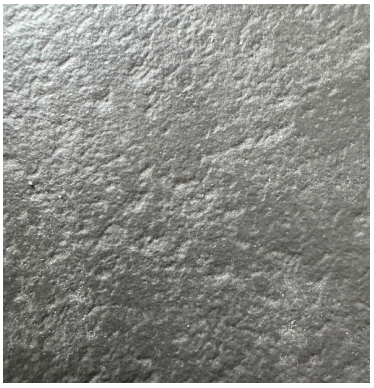
GF - GOLF



MI - MICRO



YM - YOSEMITE



MN - MOON



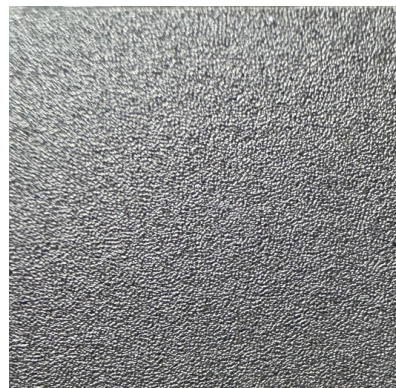
BN - SWING



BW - COUNTRY



LW - LINEAR



NK - NIKE



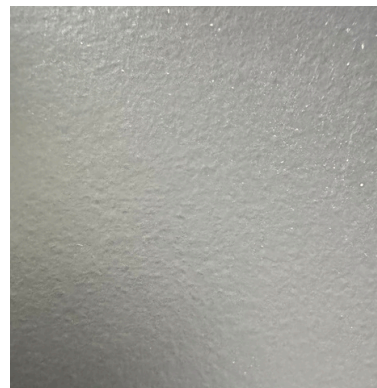
NO - PORO NOCE



KO - KOALA



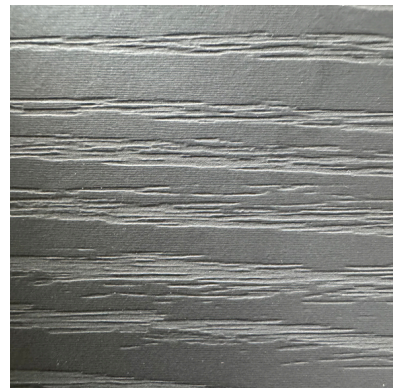
LA - LAVA



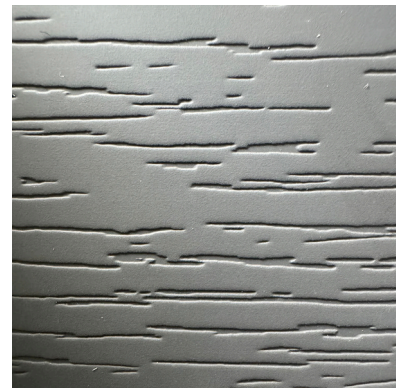
SH - SAHARA



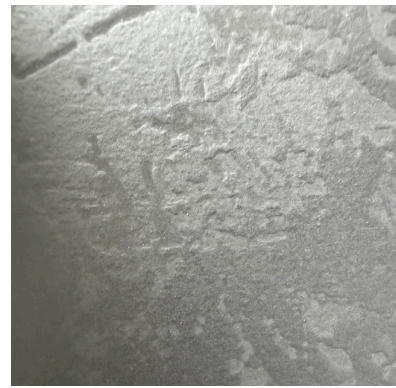
MA - MATT ALLOY



AK - OAK



MK - MATT OAK



MO - MURANO



GL - GALAXY







# PURICELLI

---

## SUSTAINABLE SURFACES

[puricelli-group.com](https://puricelli-group.com)